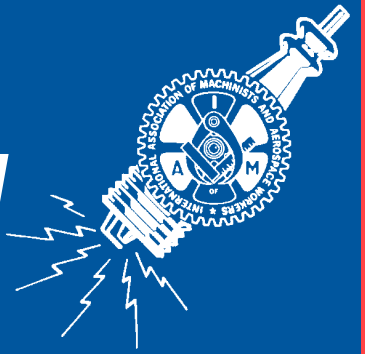


# The IAM District 190 Sparkplug



VOL. 2, NO. 6

October/November 2000

Serving the Active and Retired Members of IAM District Lodge 190

## District Lodge 190 hosts Grand Lodge convention

Under the banner "The Many Faces of the IAM," DBR Mike Day welcomed the nearly 2,000 delegates from across the U.S. and Canada to San Francisco for the 35th International IAM Convention. District Lodge 190 was represented by more than 50 delegates.

In addition to debating and refining the international constitution and bylaws, the delegates heard from a number of politicians—including Hawaii Congressman Neil Abercrombie, Oakland Mayor Jerry Brown and Labor Secretary Alexis Herman. They were also greeted by leaders from many international unions.

They also awarded a life-time membership to actor and activist Ed Asner; and they restored seniority to all African American workers who had been denied membership in the IAM before its segregationist policies were overturned in 1949.

### Ready for new century

As he banged the gavel for the final time, International President Tom Buffenbarger lauded delegates for their hard work.

"You updated and streamlined the century-old IAM constitution so that it works as well in the 21st century as it did in the 19th century," he declared.

### Convention Actions

The delegates voted unanimously to endorse the candidacy of Al Gore and Joe Lieberman. Gore pledged that as President he would "turn around the manufacturing sector and build for the future." He also called for increased worker training.

Delegates voted to hike IAM strike benefits to \$125 from the current level of \$100 per week in a two-step increase.

Delegates also voted to streamline Local Union administration by combining the offices of Secretary and

Treasurer; creating a position of Conductor-Sentinel and authorizing the appointment of a local lodge Communicator and Educator.

Delegates shot down as many proposals as they passed, including: requiring the election of tellers; requiring vacancies be filled by candidates with the next-highest vote count; eliminating meeting attendance requirements; and allowing "bullet balloting."



Area Director Don Crosatto presents a metal gavel to IP Tom Buffenbarger.



District 190 DBR Mike Day, serving as Chair of the Host Committee, calls the 35th International IAM Convention to order at the San Francisco Hilton.

## Your vote counts!

Dear IAM Member:

We're not going to tell you how to vote.

In this issue of **The Sparkplug** we review the candidates' positions on key issues important to working people and let you know if they voted right or wrong. The IAM encourages you to look at the issues, learn about the candidates, and make your own choice for who will best represent you, your family, our community and tomorrow's workers.

Working together, union members have stood up for what's right and we've won many important battles—the 8-hour day, a California Patients' Bill of Rights, and the creation of millions of jobs in the nation's longest peacetime economic boom. Those victories are possible only when we have politicians who are concerned about working people in office.

Whether you are registered Democrat, Republican, or Independent, the choices you make will determine the future of our union and our state.

Be sure to register and be sure to vote. Don't let Election Day come and go without your voice being heard.

Mike Day, Directing Business Representative

## Why is it valuable to be involved in the IAM International?



**Richard Harden**  
Retired  
Local 1414

"I came to the 1956 convention and many since. It's a great opportunity to learn how the union works and to be involved in running it."



**Mary Waller**  
The Galley/NAS Fallon  
Local 801

"When you're from a small shop, you see that the problems at the bigger shops are the same as yours. I'll take what I learn here and use it to represent our members."



**Justin Sindich**  
Veriflo Corporation  
Local 1584

"The fight's not just on the shop floor, so you need to understand the political and legislative game. You learn about that by being involved."



**Justin Tomassi**  
International Paper  
Local 1528

"There's a lot going on here, but I'm working to understand what goes on with the higher echelon leadership of the union."



**Linda Stanley**  
Albertsons  
Local 1546

"We need to be here to keep the Executive Council grounded to the day-to-day workings of what's going on at the shop floor. I'll make my voice heard."

# CALENDAR

## Local 801

c/o D.L. 190, 7717 Oakport Street, Oakland, CA94621

### Membership Meeting

Third Thursday of the month at 4:00 p.m.

All meetings held at the Carpenters' Hall, in Reno

Oct. 19 • Nov. 16 • Dec. 21

## Local 1101

1150 So. Bascom # 23 San Jose, CA95128

### Executive Board Meeting

First Thursday of each month at 6:00 p.m.

Oct. 5 • Nov. 2 • Dec. 7

### Stewards Meeting

First Thursday of each month at 8:00 p.m.

Oct. 5 • Nov. 2 • Dec. 7

### General Membership Meeting

Second Thursday of each month at 6:30 p.m.

Oct. 12 • Nov. 9 • Dec. 14

## Local 1173

1900 Bates Ave., # H, Concord, CA 94520

### Membership/Shop Stewards Mtg.

Third Thursday of each month at 6:30 p.m.

Oct. 19 • Nov. 16 • Dec. 21

### Executive Board Meeting

Second Thursday of each month at 6:30 p.m.

Oct. 12 • Nov. 9 • Dec. 14

### Retirees Club Meeting

Call Local for current meeting times

## Local 1414

150 South Blvd., San Mateo, CA94402

### Shop Stewards Meeting

First Thursday of each month at 6:00 p.m.

Oct. 5 • Nov. 2 • No meeting in Dec.

### Executive Board Meeting

Second Thursday of each month at 6:00 p.m.

Oct. 12 • Nov. 9 • Dec. 14

### General Membership Meeting

Third Thursday of each month at 6:30 p.m.

Oct. 19 • Nov. 16 • Dec. 21

## Local 1528

713 16th Street, Modesto, CA 95354

### Executive Board Meeting

Last Thursday of each month at 6:00 p.m.

Oct. 26 • Nov. 23??? • Dec. 28

### General Membership Meeting

First Wednesday of each month at 7:00 p.m.

Oct. 4 • Nov. 1 • Dec. 6

## Local 1546

10260 MacArthur Blvd., Oakland, CA 94605

### General Membership Meeting

First Tuesday of each month at 7:00 p.m.

Oct. 3 • Nov. 7 • Dec. 5

### Shop Stewards Meeting

First Tuesday of each month at 5:30 p.m.

Oct. 3 • Nov. 7 • Dec. 5

## Local 1546 (cont.)

### Executive Board Meeting

Thursday preceding membership meeting at 6:30 p.m.

Sept. 28 • Nov. 2 • Nov. 30

### Senior's Luncheon

First Wednesday of each month at 12 noon

Oct. 4 • Nov. 1 • Dec. 6

Alcoholics Anonymous meets every Saturday, 9 a.m., at Local 1546

## Local 1584

8130 Baldwin Street, Oakland, CA 94621

### Membership Meeting

Third Thursday of each month at 7:00 p.m.

Oct. 19 • Nov. 16 • Dec. 21

### Executive Board Meeting

Preceding Monday at 7 p.m.

Oct. 16 • Nov. 13 • Dec. 18

### Retirees Club

First Tuesday of each month at 12:30 p.m.

Oct. 3 • Nov. 7 • Dec. 5

## Local 1596

4210 Petaluma Blvd. No., Petaluma, CA 94952

### Executive Board Meeting

Third Tuesday of each month at 7:30 p.m.

Oct. 17 • Nov. 21 • Dec. 19

### General Membership Meeting

Third Tuesday of each month at 8:00 p.m.

Oct. 17 • Nov. 21 • Dec. 19

All meetings held at Lucchesi Community Center: 320 North McDowell Blvd., Petaluma

## Local 2182

967 Venture Court, Sacramento, CA95825

### Executive Board Meeting

Second Tuesday of each month at 6:00 p.m.

Oct. 10 • Nov. 14 • Dec. 12

### General Membership Meeting

Second Tuesday of each month at 7:00 p.m.

Oct. 10 • Nov. 14 • Dec. 12

### Retirees Club - VISTA CLUB

Third Wednesday of each month at 11:00 a.m. at Sacramento Hall

Oct. 18 • Nov. 15 • Dec. 20

# ELECTION 2000

## President



Al Gore

- Opposes cuts to Medicare and will use the budget surplus to stabilize Medicare and guarantee prescription drug benefits to seniors.
- Opposes "Right-to-Work" laws and says "the right to organize and bargain collectively should never be blocked. . . stopped . . . or taken away."
- Supports raising the minimum wage.
- Opposes privatization that would eliminate decent jobs.
- Supports NAFTA and full trading privileges for China.



George W. Bush

- His \$1.8 trillion tax cut leaves no money to shore up Medicare or pay for a prescription drug benefit.
- Supports "Right-to-Work." Bush believes union workers undermine the economy. He opposes union representation for public employees.
- Opposes increasing the minimum wage.
- Supports privatization; sought to eliminate thousands of union jobs.
- Supports NAFTA and full trading privileges for China.

## U.S. Senate



Dianne Feinstein

- Supports using the budget surplus to strengthen Social Security and add prescription drug coverage to Medicare.
- Supported funding to help local school districts recruit, hire and train 100,000 new teachers so as to lower class size.
- Supported real Patients' Bill of Rights language.
- Lifetime record on supporting issues important to labor: 84%



Tom Campbell

- Voted to finance an \$800 billion tax cut for the wealthy rather than extend the life of Social Security or Medicare.
- Undermines student achievement by block granting class size reduction funds so that they don't target the neediest schools.
- Opposed good Patients Bill of rights language
- Lifetime record on supporting issues important to labor: 22%

The IAM District 190

# Sparkplug

The Sparkplug (USPS 007966) is published bi-monthly for \$3 per year by District Lodge 190, International Association of Machinists, Oakland, Calif., a non-profit organization. Periodicals postage paid at Oakland.

The Sparkplug is the official publication of District Lodge 190 and its affiliated local lodges and notification of any meeting or election in this paper shall constitute official notice per Article B, Section 4 of the IAMAW Constitution and Articles V and VII of District Lodge 190 By-Laws.

Postmaster: Send address corrections to: The Sparkplug, 7717 Oakport Street, Oakland, CA 94621.



Beagle & Bleiweiss Communications  
Debra Chaplan, Managing Editor



# Moving?

If you plan to move or have moved already, please notify your Local Union office immediately. Use the mailing label on this newspaper, or write your name, local number, and address clearly and send it to your Local. (See calendar on this page for local union addresses.)



## ORGANIZING WINS

### Wesgo's first contract a go

By a vote of 69 to 33, the employees at Wesgo, a high-tech ceramics manufacturing plant in Belmont, voted to accept their first contract and are now officially members of Local 1414.

Organizing Area Director Don Crosatto and Organizer Mike Munoz presented the contract at meetings for the day and evening shifts. Wages was the biggest issue, especially for those on the lower end of the scale. The contract also ensured that people were correctly classified.

"This is not the end of our work," Crosatto explained. "But now we can go in with a list of specific grievances and get those taken care of."

Wesgo workers voted for the union in November, 1999. They then had a series of proposal meetings, and elected a bargaining committee.

"Negotiating this contract was a positive experience," says committee member Bob Hisle. "Wesgo management knew we were there for fair wages and working conditions—not to pick their pocket."

"The hardest thing was dealing with what you think you can get and realizing you are in the real world" says committee member and 31-year employee Conrado Sevilla. "There's room for improvement, but this contract is very satisfactory."

Chuck Russell agrees. "The main thing was to get fairness in all dealings with the company. You can't get 100% of what you want, but we got 99% in this first contract."

### Putting on the Kitz

The workers at the Kitz Corporation located on the Alameda Air Base voted in August to join Local 1584.

"I'm really proud of this victory,"



Don Crosatto (standing right) and Mike Munoz (standing left) present the contract to Wesgo's day shift at the Local 1414 offices.

says organizer Jesse Juarez. "Back in 1997, this was my second organizing campaign, and we lost it."

The company aggressively worked to keep the union out, holding captive audience meetings and giving overtime when union meetings were scheduled.

With 46 people in the unit, "there are almost that many languages spoken," said Juarez. "This is an international company, and the workers are from everywhere, from Bosnia to the Philippines. My fellow organizer, Pedro Mendez and I both speak Spanish and English, and we owe special

thanks to George Litvinoff from Local 1414. He's Russian and he helped us reach out to the Russian employees."

"This was a total team effort from the members of our organization."

### Sign the contract already

Local 1173 negotiated a contract with Lithia Sun Valley Ford last December. The members voted for it and all was well.

Not. The company refused to sign the contract for 9 months. The union filed unfair labor charges and the company was due in court on September 22. The day before the court

date, the company agreed to sign and pay the back pension funds that they now owe.

"This was a good victory," says Area Director Vern Dutton. "But we shouldn't even have had the fight."

### Buy wisely

Over the summer, Local 1414 has been picketing Saturn of Marin. Employees voted for the union in September, 1999, but since then, the employer has engaged only in "surface bargaining," says Area Director Charles Netherby. Local 1414 has filed NLRB charges because the company implemented a range of changes without bargaining.

Pickets are outside the dealership distributing leaflets about how to buy autos wisely—and union.

### IAM Scholarship packet

IAM members and their children are eligible for up to 14 college scholarships and six two-year vocational/technical school scholarships.

The first step is getting an application packet. Contact your local union or write to the IAM Scholarship Program, 9000 Machinists Pl., Rm. 117, Upper Marlboro, MD 20772-2687. The deadline is February 23, 2001.

### In memoriam

Richard Lucero, past president of Local 68, died in early September in Bellingham, Washington.

An IAM member from 1965-1990, Lucero was very committed to the union. But he took office in 1982 during a difficult time for the industries he represented. When American Can closed, he saw the membership dwindle. Eventually Local 68 merged into Local 1327 and then Local 1414.

He is survived by two daughters and three grandchildren.

### People Magazine features union dealership



The management and staff of Toyota Walnut Creek were no doubt proud to win the Toyota President's Award, and well they should be.

But they probably didn't expect that award to come with national publicity in *People Magazine* (August 28, 2000).

The story credits the good relationship between management and staff over the last 30 years, and the picture features Local 1173 shop steward Frank Fernandez and union member Ernie Davis.

Congratulations to the union members and the enlightened management who earned this honor!

## UNION PEOPLE

### Taking the reins to move the union ahead

Charles Netherby was named Area Director for Local 1414 on June 16.

"It's a wonderful opportunity. I was apprehensive, but this is a great opportunity to bring people together to make some improvements in the organization. I'm flattered, thrilled and so happy," Netherby said with his usual enthusiasm.

Netherby's career in the Machinists began in 1969 when he worked for Eng's Motor Truck Company and was a member of Local 1305. He went on to work as an auto mechanic for Mike Harvey Oldsmobile until 1985. He left there to work for Local 1414 full time as Secretary-Treasurer, and was later named Business Representative.

"My priorities are simple: Build the organization through organiz-



Netherby loves working for the IAM

ing, and help the officers and reps to lead by example. We're going to work smarter and harder and we will bring women and men of diverse ethnic backgrounds into this organization to make it better.

"I love working for this organization and getting to represent such highly skilled professional people. For 15 years, I wanted to improve the organization," Netherby added.

## SHOP ALERT

### n-Hexane info helps doctors to diagnose work-related injuries

The Occupational Health Branch of the California Department of Health Services recently released *Medical Guidelines for n-Hexane*. This document is important for all union members who work with or have been exposed to n-Hexane—which is a common ingredient in several brands of brake fluid.

The *N-Hexane Medical Guidelines* is geared to physicians, and it describes the sources, symptoms, and diagnosis of n-Hexane exposure.

If you experience numbness, tingling or pain in your feet or hands, you should do the following:

1) Contact HESIS at 510-622-4304 for a copy of the *n-Hexane Medical Guidelines*.

2) Take the *n-Hexane Medical Guidelines* with you to your primary care physician.

The document will aid your doctor in providing you with the best care possible.

Anyone who is concerned about exposure to n-Hexane is encouraged to obtain a copy of these guidelines. By making these guidelines available, the Occupational Health Branch hopes to help doctors identify nerve damage related to n-Hexane exposure.

IAM members who work in the auto industry can play a key role in reducing n-Hexane exposure and identifying the problems caused by this dangerous chemical.

ELECTIONS 2000 • VOTE • NOVEMBER 7 • ELECTIO

See page 7 for how to get involved

# U.S. Congress

	Strengthen Social Security/Medicare (HCR 68)	Worker Safety: Ergonomic Standard (HR 987)	Patients' Bill of Rights (HR 2723)	Minimum Wage (HR 3846)	China Trade Status
<b>District 1</b> (Del Norte, Humboldt, Lake, Mendocino, Napa & parts of Solano & Sonoma Counties)					
Mike Thompson *	Right	Right	Right	Right	Wrong
Jim Chase	Right	Wrong	Wrong	Wrong	Right
<b>District 3</b> (Colusa, Glenn, Sutter, Tehama, Yolo & parts of Butte, Sacramento & Solano Counties)					
Doug Ose *	Wrong	Wrong	Wrong	Wrong	Wrong
Bob Kent	Right	Right	Right	Right	Right
<b>District 4</b> (Alpine, Amador, Calaveras, El Dorado, Mono, Placer, Tuolumne & part of Sacramento Counties)					
John Doolittle *	Wrong	Wrong	Wrong	Wrong	Wrong
Mark Norberg	Right	Right	Right	Right	Right
<b>District 5</b> (Part of Sacramento County)					
Robert Matsui *	Right	Right	Right	Right	Wrong
Ken Payne	Right	Wrong	Wrong	Right	Right
<b>District 6</b> (Marin & part of Sonoma Counties)					
Lynn Woolsey *	Right	Right	Right	Right	Right
Ken McAuliffe	Right	Right	Right	Right	Right
<b>District 7</b> (Parts of Contra Costa & Solano Counties)					
George Miller *	Right	Right	Right	Right	Right
Christopher Hoffman	Right	Right	Wrong	Wrong	Right
<b>District 8</b> (Parts of San Francisco County)					
Nancy Pelosi *	Absent for vote	Right	Right	Right	Right
Adam Sparks	Right	Right	Wrong	Right	Right
<b>District 9</b> (Part of Alameda County)					
Barbara Lee *	Right	Right	Right	Right	Right
Arneze Washington	no response	—	—	—	—
<b>District 10</b> (Part of Alameda and Contra Costa Counties)					
Ellen Tauscher *	Right	Right	Right	Right	Wrong
Claude Hutchison	no response	—	—	—	—
<b>District 11</b> (Part of Sacramento and San Joaquin Counties)					
Richard Pombo *	Wrong	Wrong	Wrong	Wrong	Right
Tom Santos	Right	Right	Right	Right	Right
<b>District 12</b> (Part of San Francisco and San Mateo Counties)					
Tom Lantos *	absent for vote	Right	Right	Right	Right
Mike Garza	no response	—	—	—	—
<b>District 13</b> (Part of Alameda and Santa Clara Counties)					
Pete Stark *	Right	Right	Right	Right	Right
James Goetz	Wrong	Wrong	Right	Right	Right
<b>District 14</b> (Part of San Mateo and Santa Clara Counties)					
Anna Eshoo *	Right	Right	Right	Right	Wrong
Bill Quraishi	Right	Right	Right	Right	Right
<b>District 15</b> (Part of Santa Clara and Santa Cruz Counties)					
Mike Honda *	Right	Right	Right	Right	Wrong
Jim Cunneen	no response	—	—	—	—
<b>District 16</b> (Part of Santa Clara County)					
Zoe Lofgren *	Right	Right	Right	Right	Wrong
Horace Thayne	no response	—	—	—	—
<b>District 18</b> (Merced, Stanislaus & part of Fresno, Madera, & San Joaquin Counties)					
Gary Condit *	Wrong	Right	Right	Right	Right
Steve Wilson	no response	—	—	—	—

# Hot

This is a pivotal year for hold a 5-vote lead. If they can again take control of C chair the committees and ha tive priorities. Northern Cal

## District 10 (Contra C



Ellen Tauscher

## District 15 (Sa

Republican Tom Campbe County to run for the U.S. Se

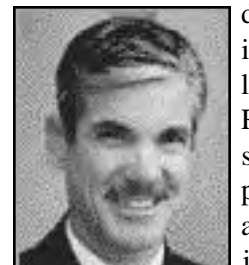


Mike Honda

## State

## District 7 (Cor

The big Senate race to v where Assembly member



Tom Torlakson

## State A

## District 16 (C

One of the most intere Oakland/Alameda's Distr incumbent, Audie Bock, term as a member of the G has since changed her affil pendent. Bock has consi 100% support for labor issu

No matter her party, Bc her true colors while in c friend to working people.

Her Democratic challeng labor record as a County S lenger, Timothy McCormicl

## Key to

\* Denotes the incumb Generally the first cand Democrat; the second ( unless otherwise notec **Right or Wrong** (A "no" "wrong." This is based c tively impacts labor's ir votes by the incumben ed a questionnaire expl **No response** (—) Challe questionnaire that was # Candidate did not vo

See page 7 for voter registration info

# State Senate

	Age Discrimination (SB 26)	Cal-OSHA (AB 1127)	Daily Overtime Pay (AB 60)	Family Sick Leave (AB 109)	Workers' Comp (SB 320)
<b>District 3</b> (Marin and part of Sonoma and San Francisco Counties)					
John Burton *	Right	Right	Right	Right	Right
Terence Faulkner	Right	Right	Right	Right	Right
<b>District 5</b> (Part of Sacramento and San Joaquin Counties)					
Michael Machado	Right	Right	Right	Right	Right
Alan Nakanishi	no response	—	—	—	—
<b>District 7</b> (Part of Contra Costa and Alameda Counties)					
Tom Torlakson	Right	Right	Right	Right	Right
Dick Rainey *	#	Right	Wrong	Wrong	Wrong
<b>District 9</b> (Part of Contra Costa and Alameda Counties)					
Don Perata *	Right	Right	#	Right	Right
Linda Marshall	no response	—	—	—	—
<b>District 11</b> (Part of San Mateo and Santa Clara Counties)					
Byron Sher *	Right	Right	Right	Right	Right
Gloria Hom	no response	—	—	—	—
<b>District 13</b> (Part of Santa Clara County)					
John Vasconcellos *	Right	Right	Right	Right	Right
John Longwell	no response	—	—	—	—

NOVEMBER 7, 2000 • VOTE • ELECTIONS 2000

aces  
→  
ess

ress. The Republicans only  
w key seats, the Democrats  
ss, which means getting to  
reater say in setting legisla-  
has two pivotal races:

**Alameda Counties)**  
ner has held the seat in East  
and Alameda Counties for  
e's known as a "Blue Dog  
ich means often acts in the  
iness over labor. The IAM  
with everything Tauscher  
pponent Hutchison has no  
labor's interest.

**Clara County)**  
p up his seat in Santa Clara  
his district is critical if a pro-  
vill take  
Honda  
k record  
pervisor  
right on  
r labor  
or trade.  
t even  
survey.



Dick Rainey

**Senate**  
**Costa County)**  
is in Contra Costa County,  
orlakson, a long-time and  
of labor  
g anti-  
nt Dick  
son has  
Trans-  
mittee  
d labor  
s.



Audie Bock

Ima Chan, also has a solid  
isor. The Republican chal-  
t respond to the survey.

**Charts**  
listed is the  
late is the Republican,  
can be "right" or  
either the vote posi-  
ts.) We look at actual  
challengers complet-  
g each issue.  
did not complete  
d out twice.  
that issue.

See page 7  
for absentee  
ballot info

# State Assembly

Age Discrimination (SB 26)    Cal-OSHA (AB 1127)    Daily Overtime Pay (AB 60)    Family Sick Leave (AB 109)    Workers' Comp (SB 320)

District	Area	Age Discrimination (SB 26)	Cal-OSHA (AB 1127)	Daily Overtime Pay (AB 60)	Family Sick Leave (AB 109)	Workers' Comp (SB 320)
<b>District 5</b>	(Part of Sacramento County)					
Gene Frazier		no response	—	—	—	—
Dave Cox *		Wrong	Wrong	Wrong	Wrong	Wrong
<b>District 6</b>	(Part of Marin and Sonoma Counties)					
Joe Nation		Right	Right	Wrong	Right	Right
Ed Sullivan		Right	Right	Right	Right	Right
<b>District 7</b>	(Part of Napa, Solano and Sonoma Counties)					
'Pat' Wiggins *		Right	Right	Right	Right	Right
Pedro Rivera		Wrong	Wrong	Wrong	Wrong	Wrong
<b>District 8</b>	(Part of Sacramento, Solano and Yolo Counties)					
Helen Thomson *		Right	Right	Right	Right	Right
John Munn		no response	—	—	—	—
<b>District 9</b>	(Part of Sacramento County)					
Darrell Steinberg*		Right	Right	Right	Right	Right
Charles Hargrave		no response	—	—	—	—
<b>District 10</b>	(Part of Sacramento and San Joaquin Counties)					
Debra Gravert		Right	Right	Right	Right	Right
Anthony Pescetti *		Wrong	#	Right	Right	#
<b>District 11</b>	(Part of Contra Costa County)					
Joe Canciamilla		Right	Right	Right	Right	Right
Jim Diaz		no response	—	—	—	—
<b>District 12</b>	(Part of San Francisco and San Mateo Counties)					
Kevin Shelley *		Right	Right	Wrong	Right	Right
Howard Epstein		no response	—	—	—	—
<b>District 13</b>	(Part of San Francisco County)					
Carole Migden *		Right	Right	Right	Right	Right
Bob Lane		no response	—	—	—	—
<b>District 14</b>	(Part of Sacramento County)					
Dion Louise Aroner *		Right	Right	Right	Right	Right
Jerald Udinsky		no response	—	—	—	—
<b>District 15</b>	(Part of Contra Costa and Alameda Counties)					
Greg Rolen		Right	Right	Right	Right	Right
Lynn Leach *		Wrong	Wrong	Wrong	Wrong	Wrong
<b>District 16</b>	(Part of Contra Costa and Alameda Counties)					
Audie Bock (I) *		Right	Right	Right	Right	Right
Wilma Chan		Right	Right	Right	Right	Right
Timothy McCormick		no response	—	—	—	—
<b>District 17</b>	(Part of San Joaquin County)					
Barbara Matthews		Right	Right	Right	Right	Right
Greg Aghazarian		no response	—	—	—	—
<b>District 18</b>	(Part of Alameda County)					
Ellen Corbett *		Right	Right	Right	Right	Right
Syed Mahmood		Right	Right	Right	Right	Right
<b>District 19</b>	(Part of San Mateo County)					
Lou Papan *		nv	Right	Right	Right	#
Stephen Kassel		no response	—	—	—	—
<b>District 20</b>	(Part of Alameda and Santa Clara Counties)					
John Dutra *		Right	Right	Right	Right	Right
Lowell King		Right	Right	Right	Right	Right
<b>District 21</b>	(Part of San Mateo and Santa Clara Counties)					
Joe Simitian		Right	Right	Right	Right	Right
Deborah Wilder		no response	—	—	—	—
<b>District 22</b>	(Part of Santa Clara County)					
Elaine Alquist *		Right	Right	Right	Right	Right
Stan Kawczynski		Right	Right	Right	Right	Right
<b>District 23</b>	(Part of Santa Clara County)					
Manny Diaz *		Right	Right	Right	Right	Right
Tom Askeland		no response	—	—	—	—
<b>District 24</b>	(Part of Santa Clara County)					
Rebecca Cohn		Right	Right	Right	Right	no response
Sue Jackson		no response	—	—	—	—
<b>District 25</b>	(Part of Madera, Mariposa, Stanislaus and Tuolumne Counties)					
Stephen Rico		Right	Right	Right	Right	Right
Dave Cogdill		no response	—	—	—	—
<b>District 26</b>	(Part of San Joaquin and Stanislaus Counties)					
Dennis Cardoza *		Right	Right	Right	Right	#
Marshall Sanchez		no response	—	—	—	—
<b>District 28</b>	(Part of Santa Clara, San Benito and Monterey Counties)					
Simon Salinas		Right	Right	Right	Right	Right
Jeff Denham		no response	—	—	—	—

## Machinists Local Lodge 1584

### Official Notice for Nomination and Election of Lodge Officers and Committee Members for the Term January 1, 2001 to December 31, 2003

Dear Brothers and Sisters:

#### Nominations:

At our regular lodge meeting, a Special Order of Business will be called at 7:30 p.m. on Thursday, November 16, 2000. Meeting convenes at 7:00 p.m. The positions listed below will be opened for nominations: President • Vice President • Secretary-Treasurer • Recording Secretary • Sentinel • Conductor • Three (3) Trustees • Six (6) Executive Board Members • Three (3) Auditors • Four (4) Central Labor Council Delegates • Four (4) IAMBA Building Association Delegates • Two (2) California Conference of Machinists Delegates and One (1) Alternate.

Each office is for a three-year term. Members nominated for office must meet all the "qualifications of Candidates" as listed in our bylaws and the IAM Constitution.

#### Election Day

Election of Officers will be held on Thursday, December 21, 2000 at 8130 Baldwin Street, Oakland. Polls will be opened from 7:00 a.m. to 7:00 p.m.

#### Absentee Ballots

Absentee Ballots will be furnished upon written request to the Recording Secretary of the Local Lodge by delivering or mailing. Members must qualify under the provisions of the Grand Lodge Constitution as follows:

- 1) Must reside in an outlying district more than 25 miles from the designated balloting place.
- 2) Confined because of illness.
- 3) On vacation.
- 4) On official IAM business approved by the Local Lodge, District Lodge or Grand Lodge.
- 5) On an employer travel assignment.

All requests for absentee ballots must be postmarked no later than Monday, December 11, 2000.

## Machinists Local Lodge 2182

### Official By-laws Change Notice

There will be a second reading of proposed changes to Local Lodge 2182's By-laws at the November 14, 2000 Regular Union Meeting.

Following the reading of the proposed changes, the By-laws Committee recommendations will be reported and a secret ballot vote will be conducted on the proposed changes.

The November 14, 2000 meeting will be held at 7:00 p.m. at the Machinists & Mechanics Lodge No. 2182 Union Hall located at 967 Venture Court, Sacramento, CA.

Proposals have been submitted to modify the following By-laws sections:  
**Article VIII: Initiation and Reinstatement Fees**—Sections 1, 2: Intent of change is to standardize fees and conform with Grand Lodge policy.

**Article IX: Dues**—Sections 1, 2, 3, 4: Intent to update dues structure to reflect current wages and per capita taxes.

*Charlie Parent, Recording Secretary, Local Lodge 2182*

## Machinists Local Lodge 1101

### Official Notice for Nomination and Election of Lodge Officers and Committee Members for the Term January 1, 2001 to December 31, 2003

Dear Brothers and Sisters:

At our regular meeting on Thursday, November 9, 2000 at 6:30 p.m.

#### Nominations will be held for the following positions:

President • Vice President • Recording Secretary • Financial Secretary • Treasurer • Conductor/Sentinel • Executive Board (nine to be elected) • Trustees (three to be elected) • Audit Committee (three to be elected)

#### Election of Officers

Election of Officers will be held at the first regular meeting in December, which is Thursday, December 14, 2000. Polls will be open from 12 p.m. (noon) to 9:00 p.m. The following election regulations will be observed:

#### Place of Nomination & Elections:

Lion's Blind Center Hall, 101 N. Bascom Avenue, San Jose

#### Absentee Ballots

Members who reside in outlying districts more than 25 miles from the bal-

loting place, members who are ill and confined under orders of a physician, and members temporarily absent from the City, may be furnished absentee ballots. Any members entitled to receive an absentee ballot shall make **written request** to the Recording Secretary of Local Lodge 1101 by delivering or mailing such request not later than ten (10) days before the election.

#### Qualifications to become a candidate for election

In accordance with Article B, Section 3 of the IAM Constitution the candidate for elective office must be a member of the Local Lodge for at least one year at the time of nomination, free from delinquency of any nature to a Local Lodge, District Lodge or Grand Lodge and working at the trade for a period of six months prior to nomination.

#### Qualifications to vote

Only members in good standing shall be allowed to vote.



**ASSOCIATED THIRD PARTY ADMINISTRATORS**

ATPA is the administrator for the  
Automotive Industries Pension and Welfare Trust Funds and  
Machinist Health Plans (Active and Retiree).

**You can contact us at 510-836-2484.**

## Why is it valuable to be involved in the IAM International?



**Usbaldo Gonzalez**  
S.F. Airport  
Local 1414

"You get to see how large the union is and meet members from different trades. We set the process for making changes with the changing times."



**Dennis Vamosh**  
Crown Cork & Seal  
Local 1528

"My father taught me that 'if you're going to be part of something, be part of it.' Being here this week, we will set the agenda for the millennium."



**Kevin Kenney**  
Lithia Dodge  
Local 1173

"The idea of unionism tends to get lost on the shop floor—but idealism gets revived on this floor. We as members are actually involved in decision-making."



**Ron Jacobson**  
Henry Curtis Ford/Mercury  
Local 1596

"It's our union. We need to know how it all works, from the top down. At the convention you learn the upper echelon more."



**Pamela Borges**  
Macy Automotive  
Local 1546

"The members need to be here to set the laws and change the constitution, because we're the ones it affects. I'd like to see more women at union women's events too."

## Election Action Steps

### Register to Vote

The deadline is **Monday, October 9**. To register, you'll need to complete a voter registration form. To get the form:

- pick up a form in person at any number of public offices (library, DMV, post office, county election office, etc.);
- call 1-800-345-VOTE to request a form be mailed to you.

### Request an Absentee Ballot

If you have any doubt that you can get to the polls on time, you will need to request an absentee ballot in writing **no later than seven days prior to the election** in order to vote. Any registered voter is eligible to cast an absentee ballot.

An absentee ballot request form can be found on the Sample Ballot you receive from the county, and many political campaigns now mail request forms to voters as well. If you do not have a request form, contact your county election office.

*The Sparkplug wishes to thank Eric Wolfe at the IBEW 1245 Utility Reporter for sharing his political candidate survey data. This issue would not be possible without him!*

### Get involved in your community

Union members — and our families — make the difference. Working families were heard in the March primaries because union members stepped forward and got involved.

Your local Central Labor Council can show you how to phone bank or walk precincts for labor-endorsed candidates this last month before the election. It's easy to do, you meet great people and you can make

### Central Labor Councils

Alameda County	510-532-4242
Contra Costa County	925-228-0161
Napa & Solano Counties:	707-557-5036
North Bay Counties	707-545-6970
Sacramento	916-927-9772
San Francisco	415-440-8502
San Joaquin & Calaveras	209-948-5526
San Mateo County	650-572-8848
South Bay	408-266-3790
Stanislaus & Tuolumne	209-523-8079

You are cordially invited to attend the  
20th Annual William W. Wimpisinger  
Charity Banquet and Golf Tournament

A benefit for

Guide Dogs of America



Saturday, December 2, 2000

Paris—Las Vegas

Recipients of the 2000  
"Gift of Sight Award"

Michael J. Day

Directing Business Rep.

District Lodge 190, IAMAW

Fred DiBenedetto

Senior VP of Operations

Hudson General

*This is a tremendous opportunity to support the IAM's long-time charity: Guide Dogs of America, and to honor our own Mike Day.*

*For ticket information and reservations:*

**818-362-5834 x 226**

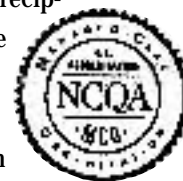
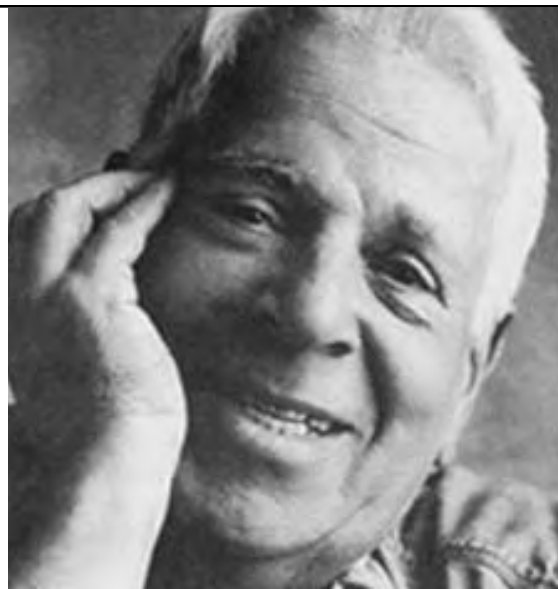
### Welcome New Members of PacifiCare/Secure Horizons

One million Americans felt just like you do about health care plans. Until they talked to us.

**PacifiCare**® 1-888-269-0920

**SecureHorizons**™ Telephonic Device for the Hearing Impaired: 1-800-387-1074

Like you, they had become eligible for Medicare. They were inundated with letters and brochures. And they had questions. Some were confused about health care benefits and coverage. Others were unsure how to get the savings they wanted. Many wondered if they'd find people experienced enough to understand them. Today, those million Medicare recipients feel Secure Horizons is the answer. and, we think you'll feel the same way once you learn about the advantages of membership in one of the nation's largest Medicare + Choice Plans. We also think you'll feel good knowing Secure Horizons, offered by PacifiCare of California, has earned three-year, Full Accreditation from the National Committee for Quality Assurance (NCQA). Feel like you want to learn more? Then call at **1-888-269-0920** for more information. After we talk, we think you'll feel like a million.



*\*Secure Horizons is a Medicare + Choice Plan offered by PacifiCare®, a Medicare + Choice Organization contracting with the Health Care Financing Administration. Anyone entitled to Medicare Part A and enrolled in Medicare Part B may apply, including those under the age of 65 entitled to Medicare on the basis of Social Security Disability Benefits or those who have elected Hospice coverage under original Medicare. Plan premiums and benefits vary by county. All members must continue to pay Medicare premiums and use contracting providers. Minimal copayments will apply.*

## Why is it valuable to be involved in the IAM International?



**Gene O'Connor**  
Peninsula Ford  
Local 1414

*"The convention reinvigorates you with the union and makes you want to go out and organize—to better the union and its members."*



**Andrea Gorman**  
Pre-Finished Metals MSC  
Local 1584

*"It's just like the election: by getting involved and voting you have a say. I get to meet union folks from around the country and learn how they approach issues."*



**Gene Borges**  
East Bay Ford  
Local 1546

*"We're here to protect the interest of the labor movement and make sure the labor movement goes forward and not backward."*



**Louiz Elvira, Jr.**  
Veriflo Corporation  
Local 1584

*"A lot of people complain about their union dues, but here you get to see your dollars at work on programs and services. It gives you a sense of unity."*



**Jan Svoboda**  
Local 1173

*"Delegates set the rules and regulations that govern the union for the next four years. It's exciting to be making those decisions."*



Why team spirit is good for what ails you.

Medicine is complex. No single doctor is a specialist in every aspect of medical science. Which is why at Kaiser Permanente, doctors and patients work together with teams of specialists, nurse

, and other top professionals. By combining their expertise, we are able to offer more comprehensive care. And just knowing that makes our members feel better.

©2000 Kaiser Permanente

[www.kaiserpermanente.org/california](http://www.kaiserpermanente.org/california)

**THE PROPOSITIONS**

**Important issues for working families on November 7 ballot**

**32 Veterans Bond Act**

Helps veterans with \$500 million in housing assistance.



**36 Drug treatment diversion**

Prop 36 directs non-violent drug possession offenders to drug treatment programs and probation instead of prison. It saves state funding for important education, healthcare and transportation needs by redirecting funds toward treatment, and away from incarceration.



**38 School Voucher Initiative**

Prop 38 asks voters if the state should give a \$4,000 voucher to each student who attends a non-public school. Governor Davis calls it “a big detour in the wrong direction.”



**33 Legislative Retirement**

Allows state legislators to participate in the California Public Employees’ Retirement System.



**37 Polluter Protection Act**

Prop 37 would overturn a State Supreme Court ruling that upheld the Childhood Lead Poisoning Prevention Act. Oil, tobacco and alcohol corporations spent \$1 million to put Prop. 37 on the ballot. It would shift costs away from polluters to taxpayers by re-classifying clean-up fees as taxes. Then local governments would have to win a supermajority vote to collect fines and penalties from major corporations.



Prop 38 abandons neighborhood schools. Not one penny of the billions spent by the Draper Voucher Initiative will be used to make our children’s schools better.

**Prop 38 provides no accountability.** Restricts state or local regulation of voucher schools. Allows fly-by-night operators to pen voucher schools and hire teachers without any teaching credentials, training or experience educating children.

**Prop 38 allows discrimination.** Voucher schools—not parents—decide whose children will be accepted. They will be able to reject students based on their gender, ability to pay, or academic and physical abilities.

**34 Campaign Finance Reform**

Limits campaign contributions and loans to state candidates and political parties. Provides voluntary spending limits; expands disclosure and reporting requirements



**35 Contracting out public works**

State and local governments now sign more than 1,000 contracts every year for more than \$100 million in private engineering and architectural services. Prop 35 would require a new selection process—that it doesn’t define—for these contracts. The result will be confusion about state contracting, lawsuits and costly delays. Our communities have urgent infrastructure and rebuilding needs that Prop 35 won’t fix.



**Dates to Remember**

**Monday—October 9**

Deadline to register to vote

**Tuesday—October 31**

Deadline to request an absentee ballot

**Tuesday—November 7**

Election Day

**39 Rebuild our schools**

Prop 39 allows voters to build modern, high-tech educational facilities without having to meet excessive supermajority requirements for school bonds. It provides strict accountability and reporting mechanisms for ensuring that school funds benefit students.

